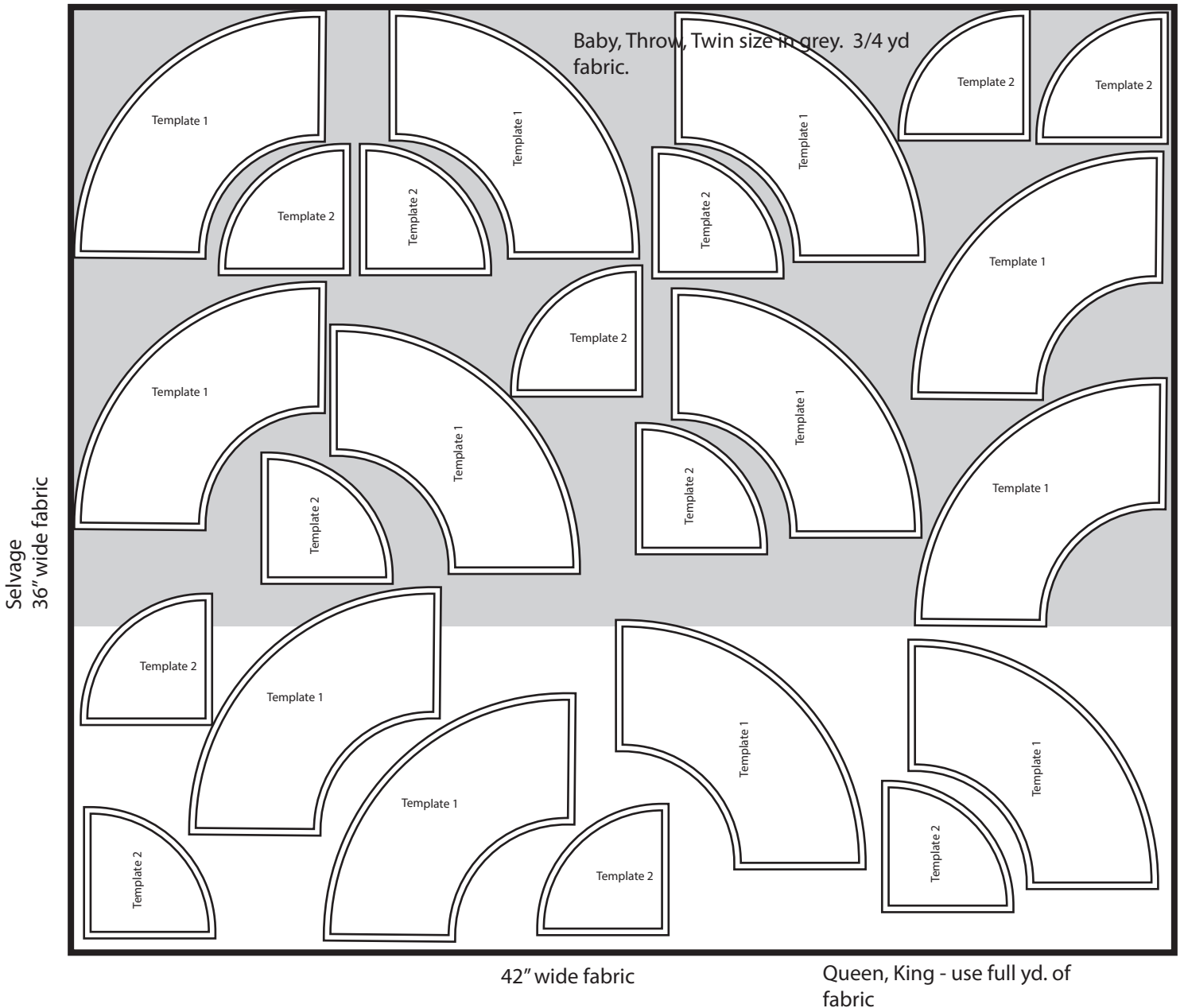


Retro Groove

Cutting chart for Templates 1 & 2 (Fabrics A-N)

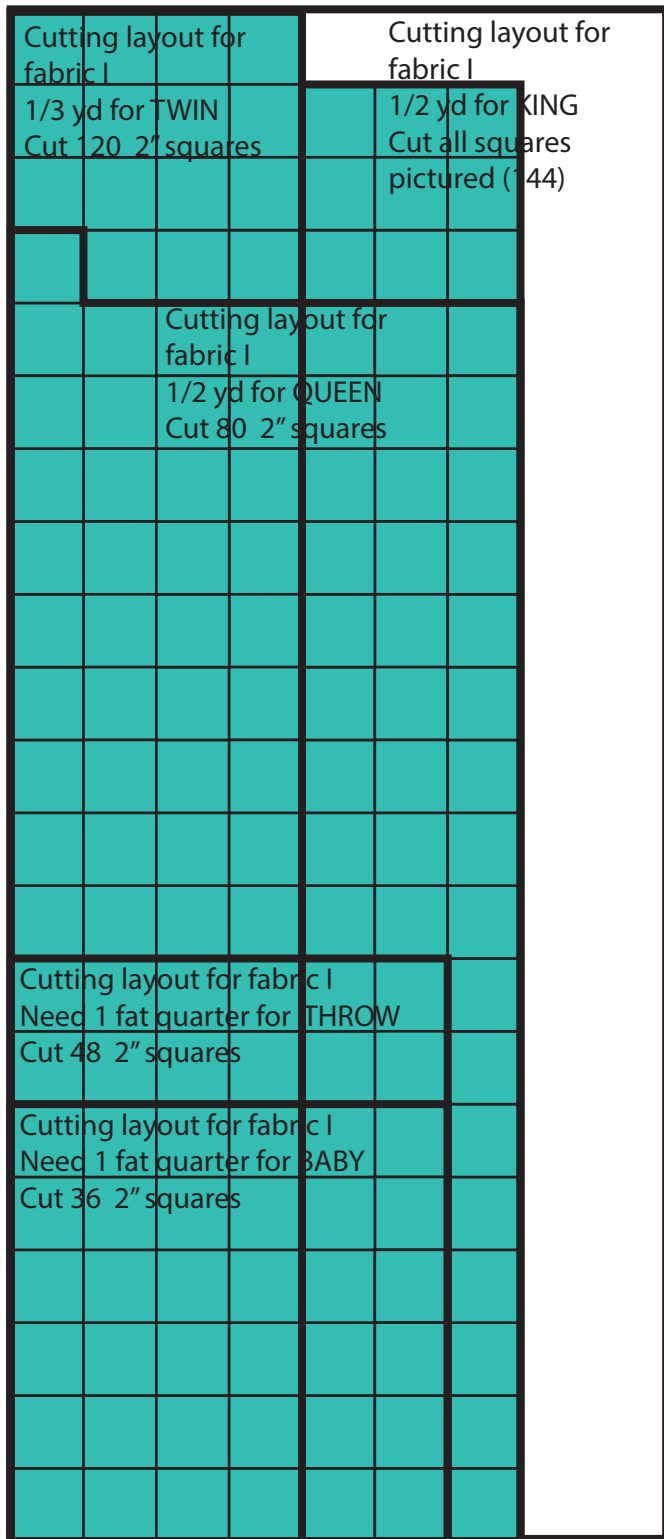
Cutting layout for each of fabrics A-N
 3/4 yd for each of these fabrics for baby, throw, twin.
 1 yd needed for queen and king.

If your fabric is directional, be mindful of the placement of the template on the fabric prior to cutting.



Retro Groove

Cutting chart for Fabric I



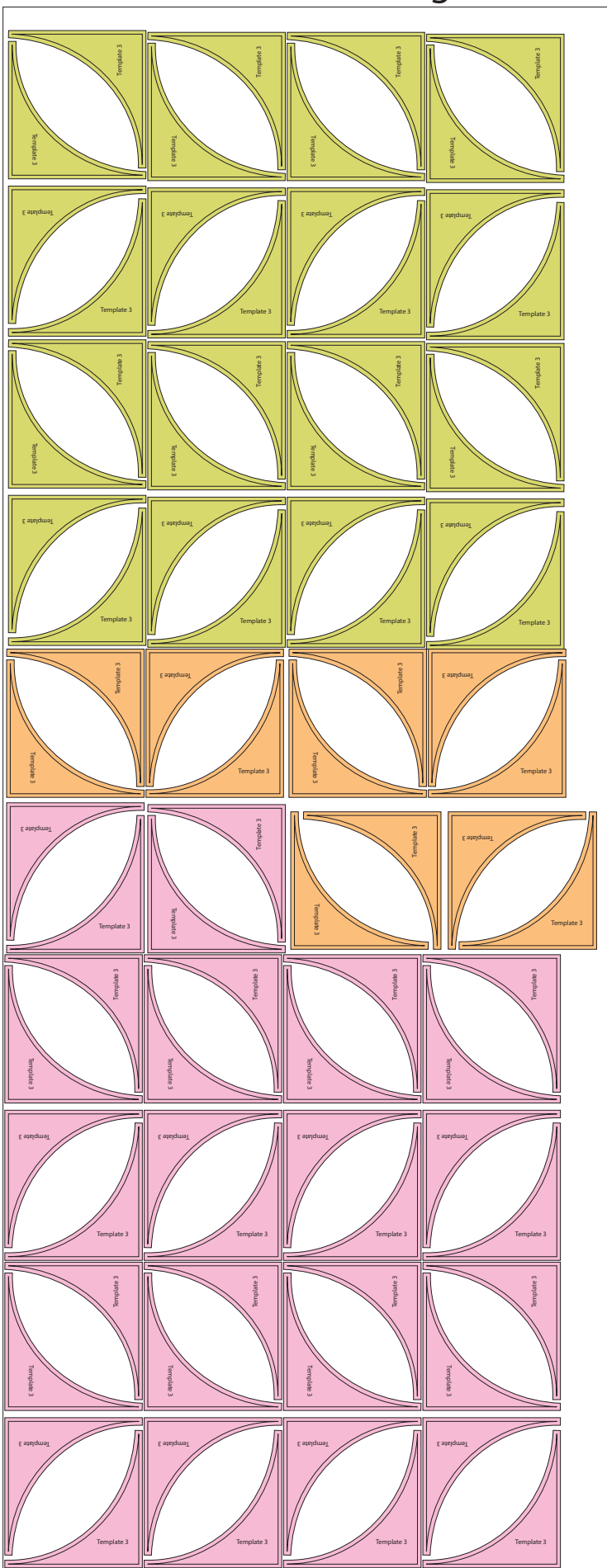
42" wide fabric

18" wide fabric

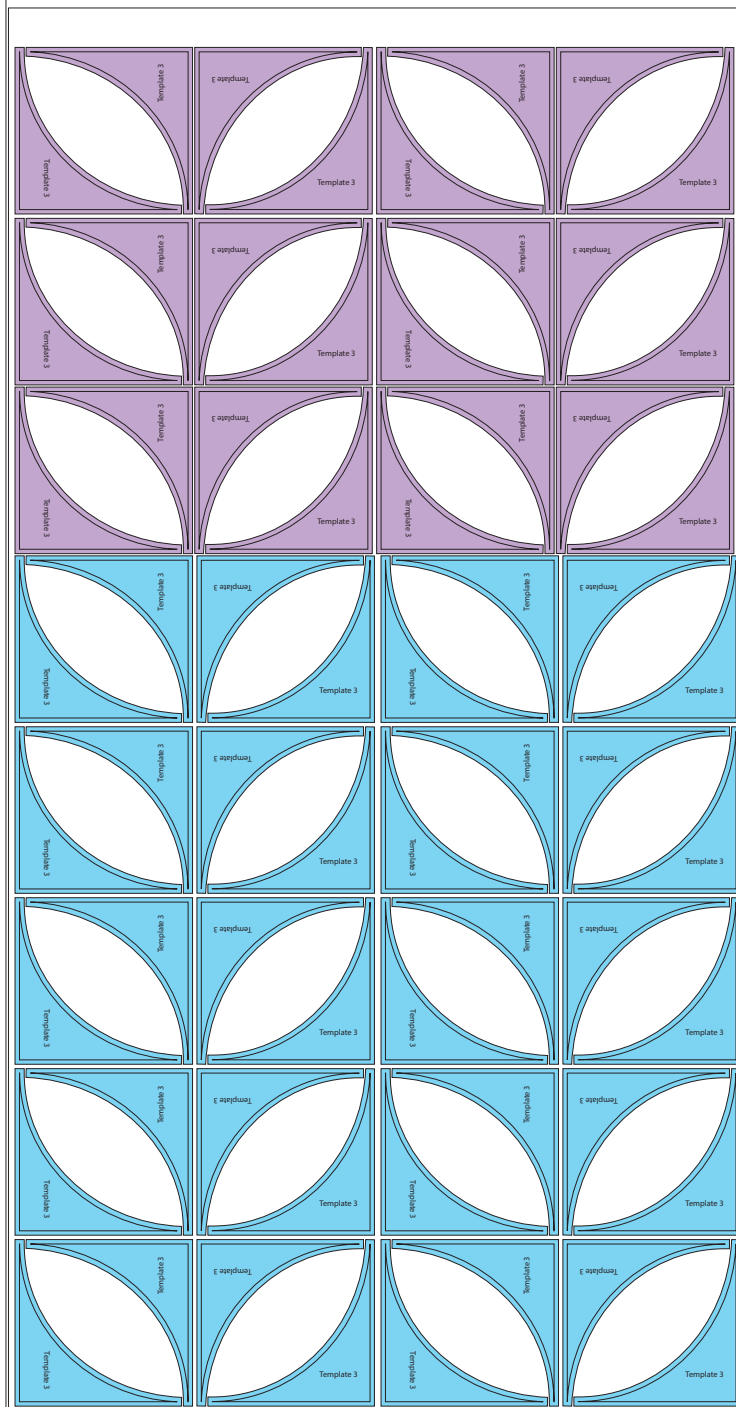
Cutting layout for each of fabric I
 1 FQ for baby, throw
 1/2 yd for Twin, Queen, King

Retro Groove

Cutting chart for Template 3 (Fabric J)



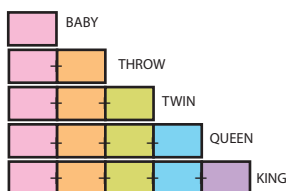
42" wide fabric



80" wide fabric

42" wide fabric

Cutting layout for fabric J
 Baby-cut only the pink
 Throw-cut the pink and orange
 Twin-cut the pink, orange, green
 Queen-Cut the pink, orange, green, blue
 King-Cut the pink, orange, green, blue (ALL)



If your fabric is directional, be mindful of the placement of the template on the fabric prior to cutting.