

week THREE



Applique Starfish Tote

designed by:  
JOANNA MARSH of  
Kustom Kwilts  
kustomkwilter.com  
IG: @kustomkwilts

estimated sewing time:  
2-3 hours

finished size:  
approx 21" x 23"

Want a quick and easy project to stitch up for a stylish day at the beach or pool? Join Joanna this week and make your own tote bag! We'll learn applique techniques, how to finish a raw-edge seam, and continue to practice what we learned in Weeks 1 & 2!



#janomecamp18

[www.janome.com/summercamp](http://www.janome.com/summercamp)

**JANOME**

WHAT'S NEXT

Page 1



# APPLIQUE STARFISH TOTE

week THREE



## MATERIALS & SUPPLIES

### FOR TOTE & APPLIQUE

- 1 yard of 54" wide Home Decor weight fabric
- 2 yards 1 1/4" wide cotton webbing
- Coordinating Thread for sewing
- Embroidery Thread
- TWO-THREE different fabric scraps 6" square each for starfish applique
- Scissors or Rotary Cutter, Ruler, Cutting Mat
- Fabric Marking Pen & Regular Writing Pen/Pencil
- Sewing Pins

### OPTION A: APPLIQUE BY SEWING MACHINE

- Applique template on page 7
- Fusible Fabric adhesive (Heat'n Bond Lite works well)

### OPTION B: APPLIQUE BY EMBROIDERY MACHINE

- Embroidery Machine and Hoop
- #12580 Ocean Starfish Applique from [www.janome-embroidery.com](http://www.janome-embroidery.com)
- Tear Away Embroidery stabilizer
- Glue stick



## INSTRUCTIONS

### STEP 1: CUT OUT TOTE PIECES

From the Home Decor fabric cut out TWO 24" squares.  
From the Cotton webbing, cut TWO 26" handle pieces.

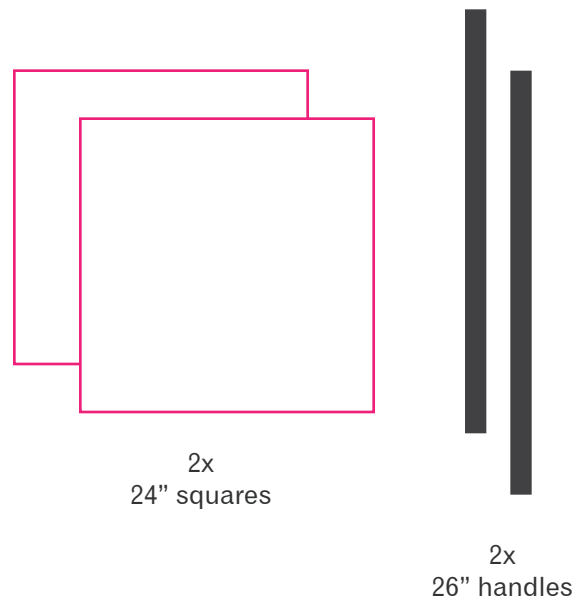
### STEP 2: APPLIQUE DESIGN

Choose which applique method to use and turn to the appropriate page for instructions. Each design is a little different:

**Option A - PAGE 3** uses a regular sewing machine and is perfect for beginners

**Option B - PAGE 4** uses an embroidery machine

When you're finished with the applique method you chose, come back to **STEP 3** on page 5 to continue with the project.



#janomecamp18

[www.janome.com/summercamp](http://www.janome.com/summercamp)

**JANOME**

WHAT'S NEXT

Page 2



# APPLIQUE STARFISH TOTE

week THREE

## OPTION A INSTRUCTIONS:

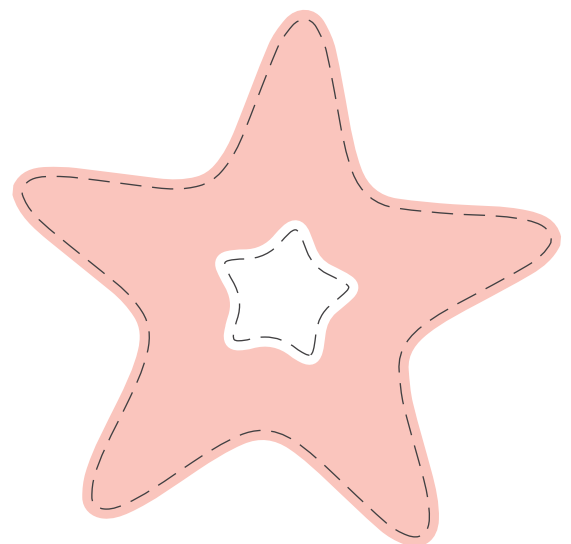
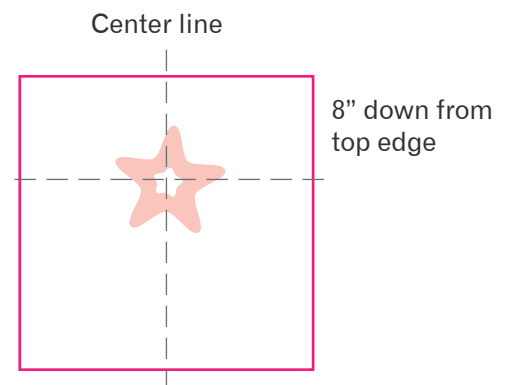
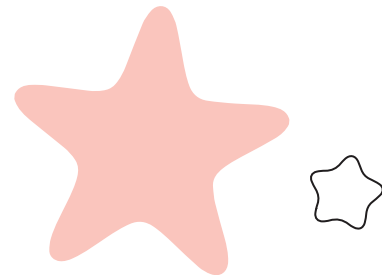
Trace applique design parts found on page 7 onto the back of the fusible fabric adhesive with a pencil or pen. You will be drawing directly on the paper side. Cut loosely around each part of the design. Then iron this to the **BACK** of the starfish fabric you've chosen. Use sharp fabric scissors to cut the shape out along the traced line then peel off the paper backing.

Use a ruler to find the center of the width of one 24" square and mark the middle with a fabric marking tool. Measure 8" down from the top edge and make a second mark. Center your starfish design on this mark.

Start with the larger piece and layer the smaller piece on top. Iron briefly to activate the fusible adhesive and hold the pieces in place.

Use coordinating thread to stitch each edge down. When sewing this project with kids, a loose zig-zag stitch is the easiest for them to stitch with. You can also use an applique stitch or a straight stitch 1/8" inside the line for a raw edge applique look.

Head to **STEP 3** on page 5 to finish up your tote.



#janomecamp18

[www.janome.com/summercamp](http://www.janome.com/summercamp)

# JANOME

WHAT'S NEXT

Page 3



# APPLIQUE STARFISH TOTE

week THREE

## OPTION B INSTRUCTIONS:

Save the purchased embroidery applique design and load onto your embroidery machine using your favorite method.

Use a ruler to find the center of the width of one 24" square and mark the middle with a fabric marking tool. Measure 8" down from the top edge and make a second mark. This mark will be where you center the fabric in the embroidery hoop.

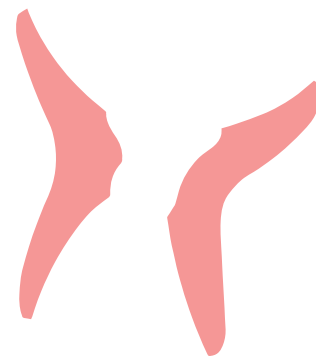
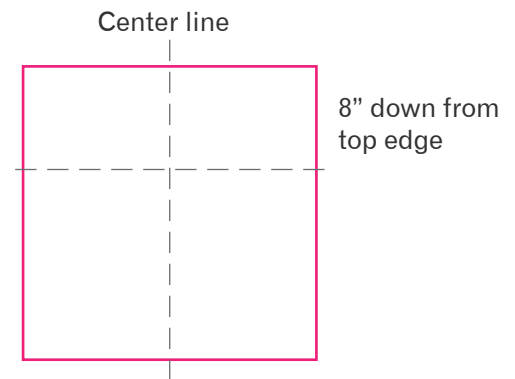
Hoop the front of the bag and secure the embroidery hoop so it is centered on the mark you made.

Use the Ocean Applique templates (on Page 7 of the Instructions downloaded from Janome-embroidery.com) for the starfish and cut out the template pieces. Take the 1st and 3rd placement templates and your first piece of fabric and use the templates to cut the shapes out of the fabric scraps.

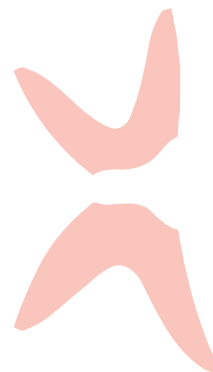
Take the 2nd and 4th placement templates and the second piece of fabric and use those templates to cut the shapes out of the fabric.

Take the "Last Placement" template and your final piece of fabric and use that template to cut the shape out of the fabric.

Attach the embroidery hoop to the machine. Check to make sure that the fabric is not folded under the embroidery hoop and that there isn't anything in the path of the hoop before embroidery starts (and the straps are out of the way).



1st and 3rd  
template  
pieces



2nd and 4th  
template  
pieces



Last  
Placement  
template



#janomecamp18

[www.janome.com/summercamp](http://www.janome.com/summercamp)

# JANOME

WHAT'S NEXT



# APPLIQUE STARFISH TOTE

## week THREE

Press the start button to stitch out the 1st placement piece outline. After stitching out, take the 1st placement piece you cut from the fabric and dab a small amount of glue stick glue on the wrong side of the fabric. Place the fabric piece on top of the stitched out outline. Smooth in place. Press the start button to stitch the tackdown stitch around the 1st applique piece.

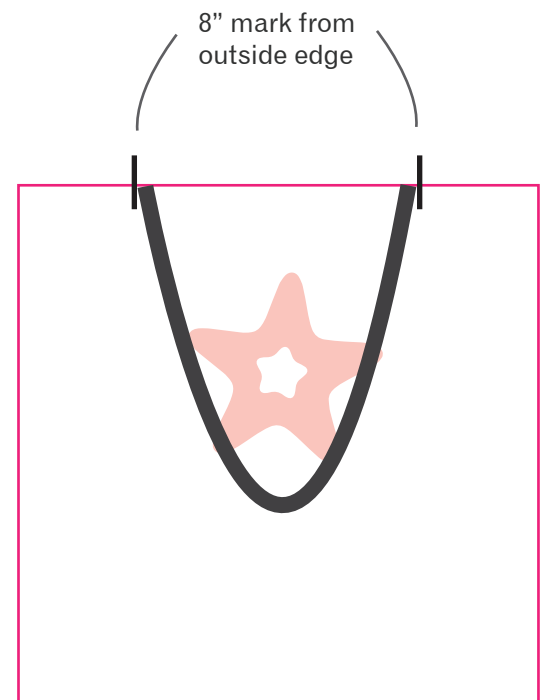
Repeat with the 2nd placement piece, 3rd placement piece, 4th placement piece, and 5th (Last) placement piece.

Once the last applique fabric piece has been stitched in place, press start to stitch out the final satin stitch. When stitching has finished, un-hoop the bag and trim any stray threads, as needed, and tear away the excess embroidery stabilizer.

Don't forget pick up below with STEP 3 to finish your tote.

### STEP 3: SEW ON BAG HANDLES

Lay down both 24" square fabric pieces right sides up. At the top edge of one fabric square, measure 8" in from the raw outside edge on the left and right sides and mark. Place the raw edge of one 26" piece of cotton webbing against the raw edge of the bag, with the outer edge of the cotton webbing against the inner edge of the 8" mark you made. Fold the strap over (being careful not to twist it) and line up the opposite strap raw edge to the raw edge of the fabric, against the inner edge of the remaining 8" mark. Baste the straps in place, 1/4" from the raw edges. Repeat this process for the other 24" fabric square.



#janomecamp18

[www.janome.com/summercamp](http://www.janome.com/summercamp)

# JANOME

WHAT'S NEXT



# APPLIQUE STARFISH TOTE

week THREE

Flip the fabric wrong side up and measure and mark 2" down from the top edge, where the straps are. Fold the raw edge of the fabric over to meet the 2" line and press. Fold the fabric over once more to conceal the raw edges, creating a 1" hem. Press and pin in place. Repeat this process for the other 24" fabric square.

Sew the folded edges down using a straight edge stitch along the bottom edge of the fold. Then fold up the handles and topstitch the top of each square to hold the webbing up.

## STEP 4: COMPLETE TOTE BAG

Place both pieces right sides together, lining up the left edges, right edges, and bottom. Pin in place. Sew all the way around the bag, starting at the top of one side and ending at the other, leaving the top hemmed edge open. Use a 1/2" seam allowance.

Finish the raw edges by sewing a zig-zag stitch around the interior of the bag, encasing the quarter inch seam allowance. Turn the bag right sides out.

You've finished! Fill your adorable tote bag with towels, sunscreen, and some shades and hit the water!

Don't forget to tag us (and @kustomkwilts) on Instagram with [#janomecamp18](#) so we can see your tote!



Topstitch & Edgestitch folded hem



Sew around sides and bottom



[#janomecamp18](#)

[www.janome.com/summercamp](http://www.janome.com/summercamp)

# JANOME

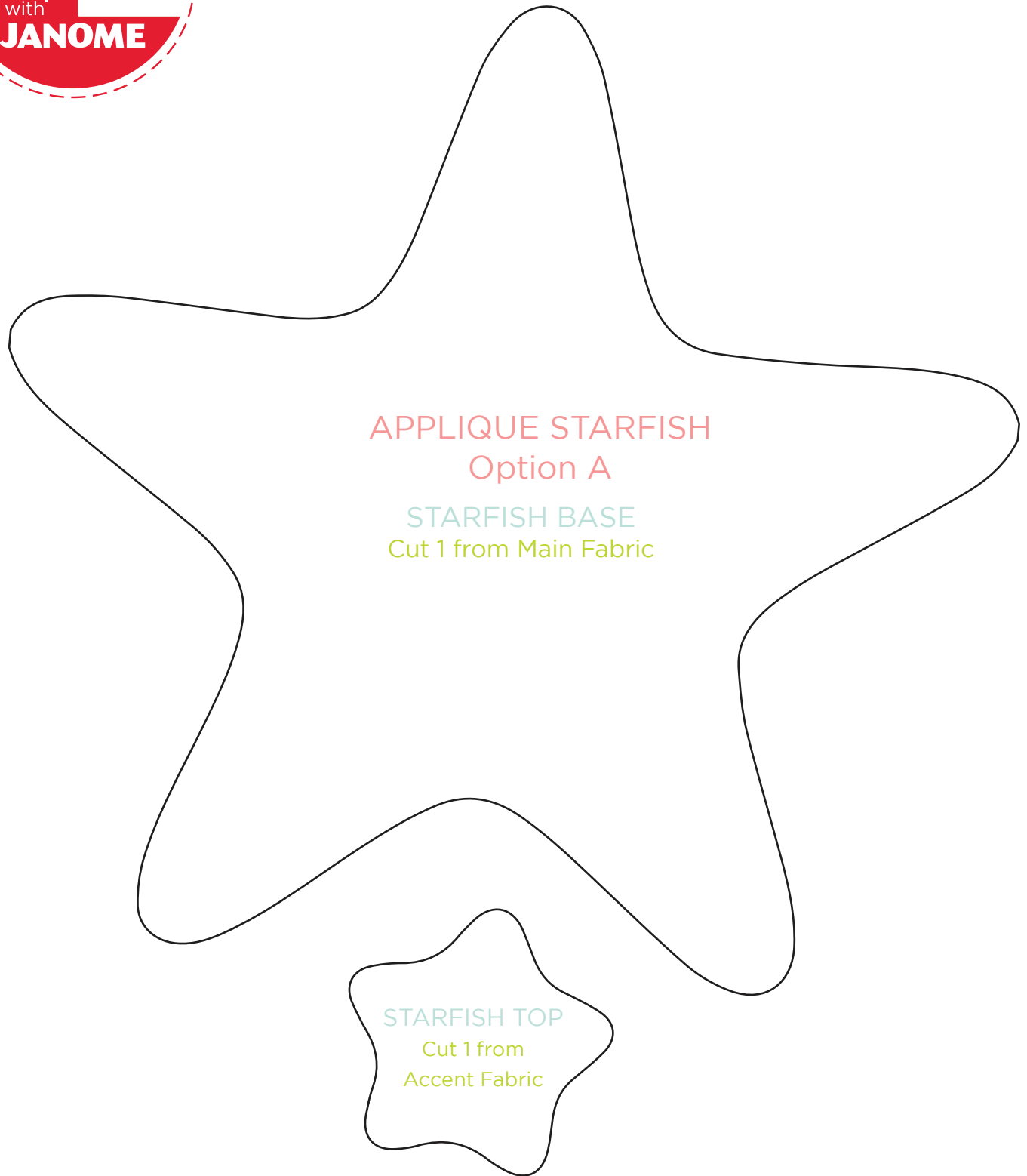
WHAT'S NEXT

Page 6



# APPLIQUE STARFISH TOTE

Pattern Page 1 of 1



#janomecamp18

[www.janome.com/summercamp](http://www.janome.com/summercamp)

**JANOME**

WHAT'S NEXT

Page 7